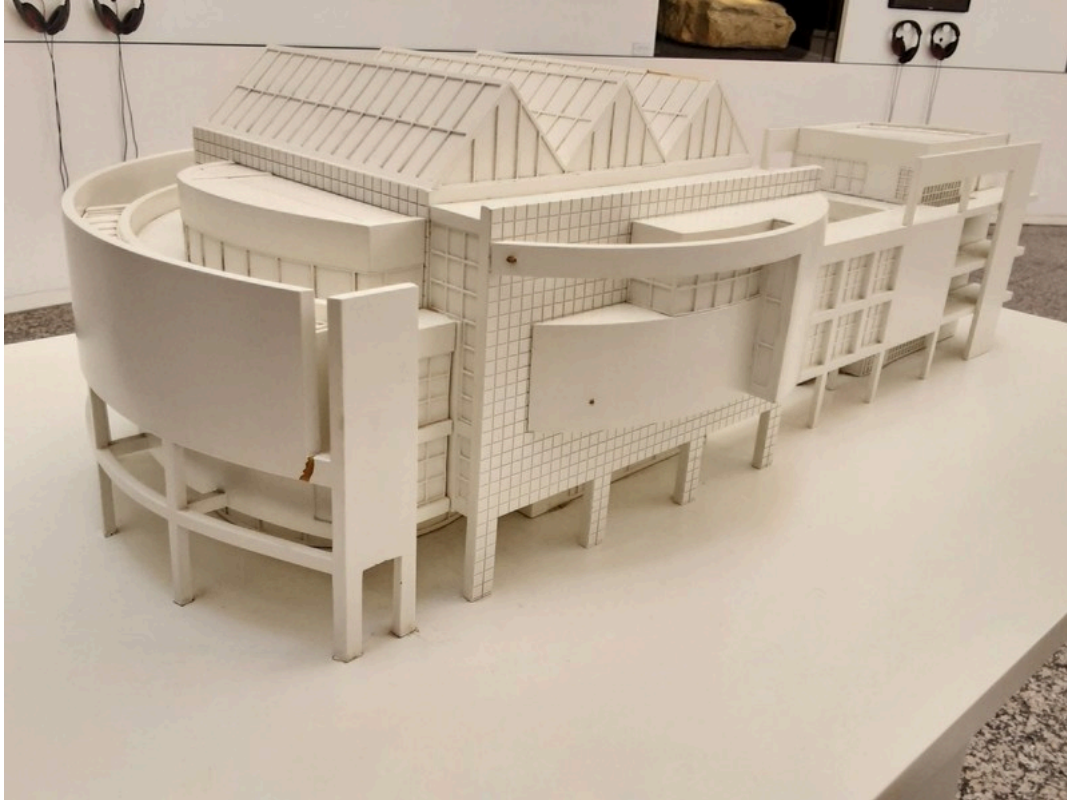


Short Report



Karla Nieraad | ©Ingrid Seybold

Townhouse in Ulm

Münsterplatz 50
89073 Ulm

Tel: +49 731 161 7700
Fax: +49 731 161 7701

stadthaus@ulm.de
<http://stadthaus.ulm.de>

Welcome!

The Ulm Town Hall is an open exhibition space and event venue for current topics in culture, social affairs, science, economics, media and politics – with tourist information and a café–restaurant. It is a meeting place for people of all backgrounds, a forum for public discourse, and an extension of Münsterplatz. The exhibitions in particular are open daily and admission is free. The architecture also presents itself with the greatest possible openness, with the interior and exterior merging into one another.

TEST RESULT

for

Stadthaus Ulm

89073 Ulm, Certificate-ID: PA-11856-2025



This offer was classified according to
the criteria of the nationwide label

»Tourism for All«

and, in the period from

March 2026 – February 2029

is entitled to use the label

»Accessibility checked«

and the associated pictograms

in accordance with the contract.



Karla Nieraad

©Ingrid Seybold

Accessibility at a glance

- Building accessible without steps
- All rooms and facilities that can be used by guests are accessible without steps or via an elevator.
- 90 cm minimum width of all passageways/doors
- Restrooms for people with disabilities
- Assistance dogs welcome
- Guided tours for people with disabilities

Information for people with walking difficulties and wheelchair users

All areas relevant for testing meet the quality criteria of the label "**Accessibility certified – partially accessible for people with walking disabilities**".

Some **information on accessibility** are listed below. For detailed information please see the evaluation report.

- The nearest public parking garage, "Am Rathaus," is located on Neue Straße, approximately 170 meters away.
- The Rathaus bus stop is 170 meters away.
- All rooms and facilities accessible to guests are step-free/at ground level or accessible via elevator. The door thresholds to the terraces are 6 cm high.
- There are no slopes with a gradient of more than 6%.
- All doors/passages and paths that are accessible to guests are at least 90 cm wide.
- There is a lowered counter.
- Most exhibits and information are visible while seated. "Münsterblick" shows a section of a 180-degree live view from the tower of Ulm Minster. Visitors can enjoy a view that is otherwise only possible from high above.
- There is a public toilet for people with disabilities, which is accessible from one side (at least 80 cm). There is a foldable grab rail on the accessible side of the toilet.
- Guided tours are offered for people with walking disabilities and wheelchair users. Advance booking is required.
- Mobile or fixed seating is available for people with walking disabilities, which can be used during the tour.

Information for people with hearing impairments and deaf people

Some **information on accessibility** are listed below. For detailed information please see the evaluation report.

- In the event of an acoustic alarm, there is no additional visual flashing signal.
- There is no audio induction loop system.
- Wi-Fi is available.
- An outgoing emergency call in the elevator is only confirmed acoustically. Alternatively, stairs are available.
- Information about the exhibits is provided in writing.

- Guided tours are offered for deaf people (in German sign language), but not for people with hearing impairments.

Information for visually impaired and blind people

Some **information on accessibility** are listed below. For detailed information please see the evaluation report.

- Assistance dogs are welcome.
- The entrance area is designed with high visual contrast.
- The signage (for orientation) is designed in easily legible, high-contrast lettering.
- All elevated areas accessible to guests are brightly lit without glare.
- An outgoing emergency call in the elevator is confirmed acoustically.
- Steps do not have high-contrast edges.
- Stairs have handrails on both sides.
- Information is not available in relief or Braille.
- Guided tours are offered for people with visual impairments and blind people. Advance registration is required.
- During the tours, exhibits are integrated for touching.

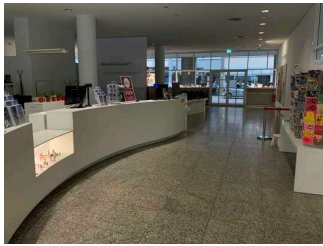
Information for guests with cognitive impairments

Some **information on accessibility** are listed below. For detailed information please see the evaluation report.

- The name of the museum is clearly visible from the outside.
- The destinations of the paths are within sight, or there are path markers at a constantly visible distance.
- There is no information in easy or simple language.
- No guided tours are offered for people with cognitive impairments.

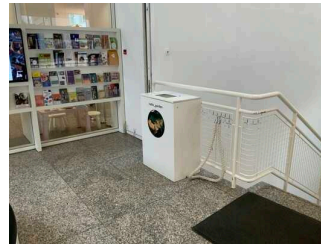
Image Gallery

We have put together some photos from the company / offer for you. You can find more photos in the detailed reports.



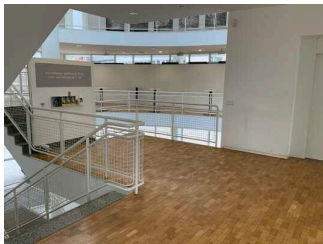
Level 0: Tourist information

©Angelika Kleinheinz



Level 0: Permanent exhibition Radiogarden

©Angelika Kleinheinz



Level 1: Foyer

©Angelika Kleinheinz



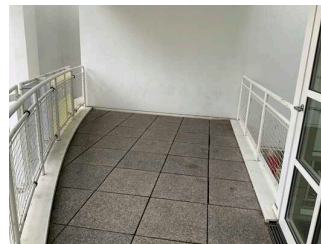
Level 1: Stadthausaal

©Angelika Kleinheinz



Level 1: Permanent exhibition "Otl Aicher's last works – The busts of the siblings Hans and Sophie Scholl"

©Angelika Kleinheinz



Level 1: Terrace

©Angelika Kleinheinz



Level 2: Exhibition areas

©Angelika Kleinheinz



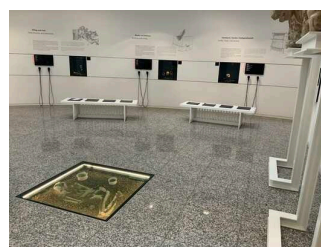
Level 2: Terrace

©Angelika Kleinheinz



Level 3: Exhibition areas

©Angelika Kleinheinz



Level -1: Permanent exhibition "Underground!"

©Angelika Kleinheinz



Level -1: Toilets

©Angelika Kleinheinz

Information on the "Tourism for All" labeling system

All establishments and locations certified with the label "Tourism for All" meet the following quality criteria:

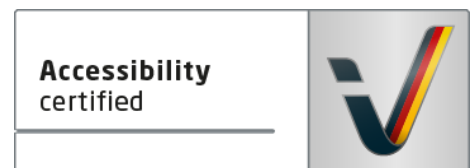
- Data and information on accessibility are collected and checked on site by **external, specially trained evaluators**. The method is not based on self-assessments.
- Data on accessibility is available **in detail** and can be viewed by the guests.
- At least one staff member has successfully passed a **training** on "**Accessibility as a comfort and quality feature**".

The labeling – explanation of the logos and pictograms

The label "**Information about Accessibility**" indicates that detailed and verified information on accessibility is available for all groups of people.



The label "**Accessibility certified**" is based on "Information about Accessibility". It means that the quality criteria defined for specific groups of people are met partially or completely.



The label "**Accessibility certified**" is available in two requirement levels:

"Accessibility certified: partially accessible".

The quality criteria are partially fulfilled for the pictured group of people, i.e. the establishment/location is partially accessible for wheelchair users. The "i" in the pictogram indicates that it is recommended to read again carefully whether the offer meets all (your oder the guest's) individual requirements.



"Accessibility certified: accessible".

The quality criteria are fulfilled for the pictured group of people, i.e. the establishment/location is accessible for wheelchair users.



There are defined quality criteria for **seven groups of people** and a **specific pictogram** for each group.

People with walking disabilities



Wheelchair users



People with hearing impairment



Deaf people



People with visual impairments



Blind people



People with cognitive impairments

